

## Thin-Version Quick Release

A totally redesigned version of our quick release systems, this quick release kit utilizes a pin and gear locking mechanism for maximum durability, no play, and all the while reducing required space. In fact, this reduces the height of our quick release systems by over half from a 3 inches height to a mere 1.25 inches.

Perfect for those individuals who feel the need to put their steering wheels further from their bodies, or for those who have the necessity to use a crush-type hub.



**SRK-400B**



**SRK-400S**



**SRK-400BL**



## 2.5 Generation Quick Release

5-Hole versions also available



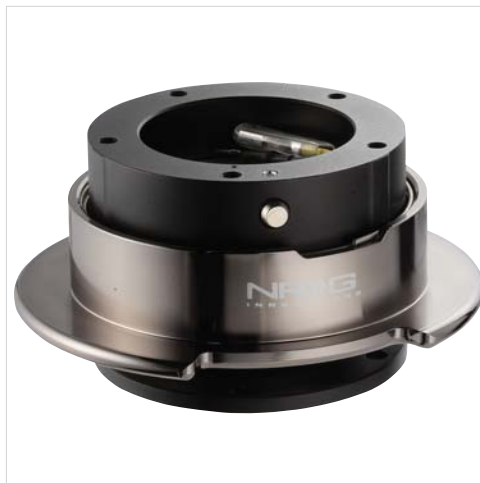
**SRK-250S**



**SRK-250R**



**SRK-250B**



**SRK-350BC**



**SRK-250BL**

Patent Pending on new design and features

Another upgrade utilizing all the features of the Second Generation Systems with the added benefit of a flared ring. This allows much easier release for the steering wheel by providing added leverage and grip onto the pull ring. Perfect for race applications where the use of gloves are required.

Rings are also interchangeable for a variety of different color combinations.

## Second Generation Quick Release

5-Hole versions also available



**SRK-300CF**



**SRK-200R**



**SRK-200S**



**SRK-200BLSC**



**SRK-200BL**

Patent Pending on new design and features

The NRG Innovations has developed the Next Racing Generation in quick release. These new units feature many options that conventional Ball-Lock quick release systems do not offer including specially designed raised sections to prevent the hub from stretches, a self locking mechanism for ease of use and safety functions, and as always, a variety of different colors and color combinations.

Made from highest quality aircraft aluminum or powder-coated stainless steel for maximum durability, these units are meant to last, remain stylish, as well as have functional usage



## 1.5 Generation Quick Release



**SRK-100CF**



**SRK-100R**



**SRK-100S**



**SRK-100BL**



**SRK-100BC**

This product is designed for race and street application. By allowing the user to remove and replace aftermarket steering wheels from the attached hub quickly, this product can deter theft, allow quick entry and exit to the vehicle, or even allow a more comfortable steering wheel position for the driver.

Features a variety of colors and finishes for NEXT GENERATION styling to any vehicle. Ball-Lock type mechanism for best locking fit and usability. Also features push pin for prevention of premature unlocking. Made from the highest quality aluminum for maximum durability and usability.

## Quick - Lock

NRG Innovations has developed the Next Generation in anti-theft security for vehicles with aftermarket quick release systems. A perfect compliment to its Quick Release Systems, these units are meant to quickly and easily disable the use if the steering hub by not allowing the placement of a steering wheels into the hub. No more worries of someone simply replacing your steering wheel with their own to drive away with your vehicle. You can now even leave your steering wheel in the car instead of carrying it around. Made from solid steel and utilizing the Ball-Lock design and key mechanism, this product will deter any would-be thief from stealing your ride.



**SRK-101LS**



**SRK-101MB**

Tired of putting your steering wheel or quick lock in a place where it can be damaged during driving or going into the trunk to put it away? The EZ-Holder solves these problems while once again adding another level of style to your interior. Mounts your steering wheel or Quick-Lock easily and securely. Available in Silver or Black.

## Quick - Lock Holder



**SRK-101LS**

### Features

- Powdercoated texture and aluminum material, compact styling and easily place in compact spaces.
- Includes all mounting hardware
- Available colors: Silver or Matt Black



**SRK-101B**





## Short Hub



SRK-130H



SRK-100H



SRK-120H



NRG Innovation has developed another complement to our quick release steering kits. These units were designed specially so that an aftermarket steering wheel installed with the quick release kit still mounts in the same location, not too close to the driver. Made from the highest quality aluminum. This product is designed utilizing one piece solid construction for the maxim in durability and usability.

Other Colors/Finishes: Black, NRG Metallic, Silver

## Hood Dampers



### Product Description

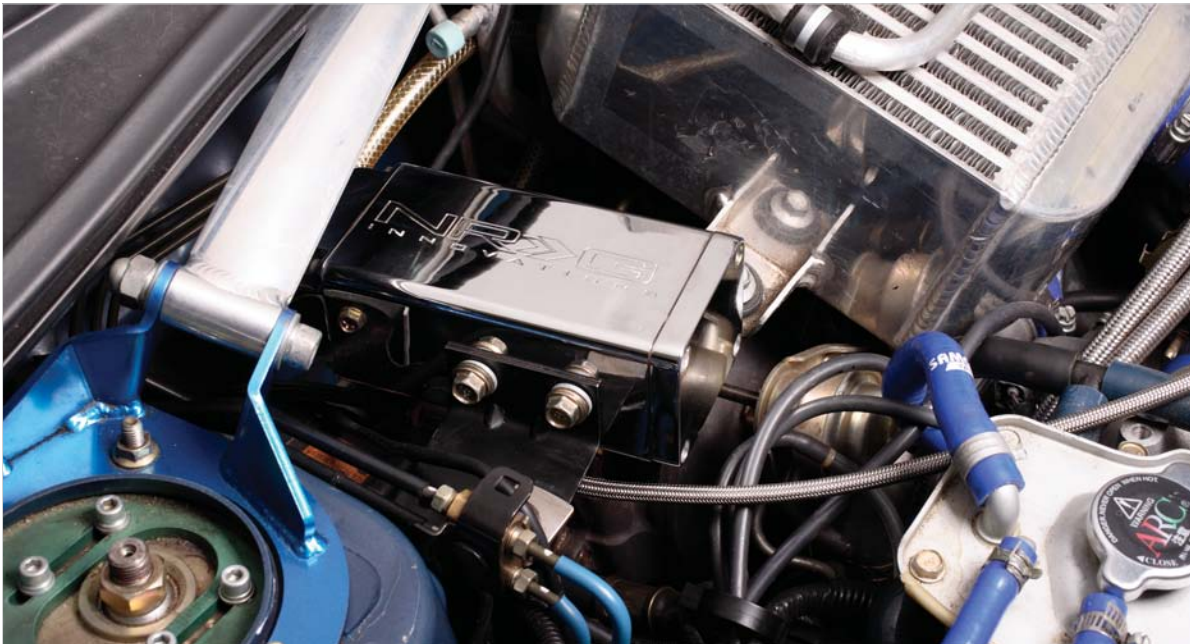
Often times, injury while working on a vehicle is caused by the hood falling on an individual. This product is offered for that purpose as well as a way to exhibit your under hood modifications. These units also allow the hood to remain up and stable even under high wind conditions and were thoroughly tested for repeated use. With the use of oil filled shocks and light dampening for lightened hood applications these dampers have lift assist and slow decline features. Stainless steel w/ lightweight alloy shaft and casing with hydraulic oil seals end links for mounting points for durability and heat resistance. Weighs in at only 200g on average, this is a must-have addition to any hood prop vehicle.



### Features

- Easy to install and all hardware included.
- 2 Types available, one for lightweight hoods, and another for standard hoods. Please specify when ordering.
- Other Colors/Finishes (casing only): Silver, Carbon Fiber

## Engine



Oil Catch Tank - Installed connecting the PCV Valve or pressure release hose to the intake pipe, this unit captures and stores excess oil coming from valve cover. This results in clean air recirculating back into the intake unlike the factory system which puts the release tube directly back into the engine. Results a decrease in valve cover pressure prolonging engine life and increasing performance. Also a must in any competition car due to regulations concerning oil on the track.

Features  
 Stainless Steel Construction  
 Indicator Hose  
 Vacuum pressure sender adapter  
 Mounting hardware and hoses included



## Voltage Stabilizer



**EPAC-100**

E-Pac2 Voltage Stabilizer - Connected to battery terminals, this unit stabilizes power output to all electrical components drawing power from battery. Using an independent power source, this unit boosts battery power when under high loads, thus regulating fluctuations coming from the battery that can result in loss of power or responsiveness from ignition system components. Can also improve interior lighting as well as stereo equipment performance.

E-Pac3 Voltage Stabilizer - Updated version with more compact design

Features

Titanium color with Positive and Negative wires



**EPAC-300**



**EDA-101R**



**EDA-101BL**



**EDA-101S**

## Engine Torque Damper



**EDA-101T**

Engine Torque Damper - Usually mounted to the engine or mount to a rigid part of the chassis such as strut tower, this unit stabilizes engine movement under load. Increases engine responsiveness by reducing power loss to the drivetrain. Useful during hard launches by providing extra controllability since engine movements are dampened. Shifting and throttle response becomes smoother, useful for the weight transfer used in drift and time attacks. Also saves engine mounts.

Features

Available in anodized red, silver, blue, or titanium finishes  
 6061 Aluminum casing and mounting brackets with steel end-links  
 Adjustable damper rates and replacement bushings included  
 Mounting hardware included with specific applications  
 Do-it-yourself kit also available

Titanium color with Positive and Negative wires



## Fuel Pressure Regulator

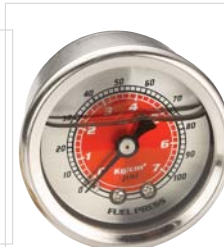


**FRG-100BC**

Installed onto the fuel rail or in-line with fuel lines, this units allows fine turning of fuel curve mechanically by increasing or decreasing fuel pressure to the fuel lines. Boost dictated to steady fuel pressure even under boost conditions resulting from forced induction.



**FRG-HONC**



**FRG-100R**



**FRG-100CF**



**FRG-110G**

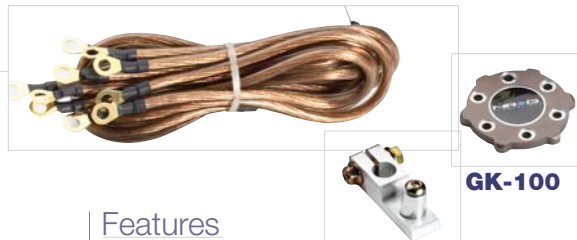
### Features

- Available in Glossy Nickel Black or Titanium
- Aluminum Construction
- Mounting hardware included

## Ground Wire System



Installed on battery's negative terminal or onto chassis, this unit centralizes the grounding point of the electrical mechanisms of the vehicle. This causes less fluctuation for the electrical system and can improve overall performance and responsiveness of the engine end electrical components resulting from proper grounding. A must-have for any vehicle with engine swaps since grounding tends to be an issue with these types of performance modifications.



**GK-100**

### Features

- Copper center hub
- High Quality 12 gauge low resistance wires with smoke titanium silicone wrap.

## High Pressure Radiator Cap



**RDC-100**

High Pressure Radiator Cap - This unit was designed to reduce underhood temperatures by increasing and maintaining the internal water pressure of your vehicles cooling system through the utilization of a stiffer valve spring in the cap housing. This allows for much better flow and consistent running temperatures.

Available in low or high radiator mounting positions  
Features 1.3 Bar pressure hold

Radiator cap housings - For added styling and easier installation and removal of radiator caps



**RDC-100B**



**RDC-100BL**



**RDC-100R**



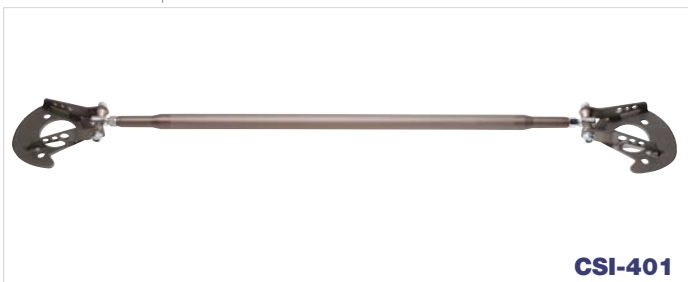
**RDC-100S**



## Chassis Stiffening



Strut Tower Braces - This product stiffens up the chassis by connecting the two most rigid parts of a vehicle's chassis, the strut towers. By linking these two parts on opposing sides as one, lateral forces onto the body can be effectively subdued. Results in significantly less roll and chassis twist under hard cornering situations. Also results in more responsive cornering and increased driver feedback and steering feel.



### Features

Fully Aluminum construction from shaft to mounting brackets.  
Carbon fiber shaft and titanium finishes also available. Variety of applications also available.



## Chassis Stiffening

2 Point Lower Chassis Brace - This product stiffens up the chassis by linking the tension arms or toe adjuster brackets of opposing sides. This is usually the place where a large amount of lateral load is transferred due to its proximity to the alignment arms and the tires themselves. By bracing this section of the chassis, a large amount of load can be transferred to a larger area, decreasing the stress to the chassis and its flex points under hard cornering, reducing overall body roll and increasing steering response, feel, and driver feedback.



4 Point Lower Chassis Brace - Improves upon the design of the 2 point braces by further widening the load transfer area, usually also linking opposing sides of the chassis itself. This further increases the rigidity of the chassis beyond the capabilities of the 2 point system, increasing performance gains to another level.

### Features

One piece solid aluminum construction for maximum durability and performance  
Titanium Finish



## Interior



**RSC-310**

Seat - This product improves comfort, looks, and performance in a vehicle. A variety of styles and applications are available from full-race carbon fiber bucket seats with maximum support to stylish leather seats.

### Features

- Variety of styles available with different levels of support, cushion, and materials
- Lightweight and durable materials used
- Rails and mounting hardware included



**RSC-320**



**RSC-300**

Bracket - This product complements the seats by providing rigid support to the stock mounting brackets of specific applications.



### Features

- Solid steel construction for maximum durability and safety



## Interior



**RSC-210**



**RSC-200**



**RSC-204**



**RSC-100**



**RSC-5C**

## Gear Console

This product complements the interior of the vehicle by providing NEXT RACING GENERATION styling to the gear console area.

Available in black with paintable texture or carbon fiber for the exotic look.

### Features

Steel construction for maximum durability, leather boot with red stitching and chrome top cap



## Steering Wheels

These units provide the best in both quality and styling. Many different sizes and designs available from classy smooth luxury leather with red stitch to 3 in. deep dish suede steering wheels for maximum control, NRG steering wheels are sure to give your vehicle that extra edge of control and styling.

Sizes available from 300mm all the way to 350mm

**ST-012S**



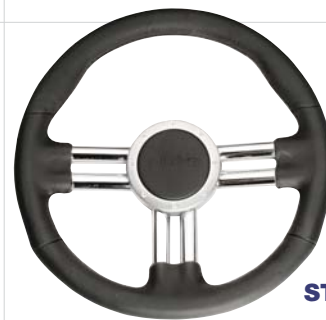
**NRG-007R**



**ST-008R**



**ST-011S**



**ST-009R**



**ST-006S**



**ST-001R-CB**



**ST-001R-R**



**ST-001R-S**





## Seat Belt Harness

4-Point Race Harness - All the features and capabilities of the street harness but with competition strength with an even heavier duty steel cam -lock type buckle. Nylon belts are also double reinforced for pure competition driving purposes. Also available in 3-inch width for added support and safety.



**SBH-4PCB**

### Feature

Double reinforced high grade nylon 2 or 3in. width for competition purposes  
Steel Buckle for competition purposes



**SBH-100BL**

4-Point Street Harness - This product provides an extra level of safety beyond that of the stock 3 point harnesses. By providing the extra point, this unit also provides additional support when doing any kind of sport or competition driving. Sabelt buckle and nylon belts provide the utmost in quality for this unit.

### Features

High grade nylon belts 2" width  
Sabelt Plastic type buckle  
Steel adjusters and mounting brackets  
Mounting hardware Included

## Shift Knob

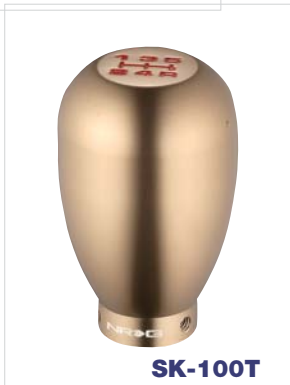
Shift Knob - This product improves the overall look of the interior of the vehicle while providing some performance gain. Different shapes of the knob are ergonomically correct depending on shifting style. Weighted aluminum construction improves shifting by increasing inertial weight in order to allow shifter to more smoothly and quickly engage into the gear box.



**SK-100BC**



**SK-100SC**



**SK-100T**



**SK-100N**



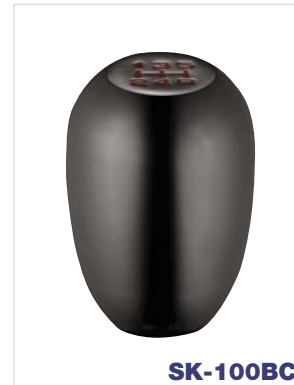
**SK-501PP**



**SK-100GM**



**SK-100GP**



**SK-100BCH**

## Shift Knob



**SK-900T**



**SK-900SL**



**SK-900BC**



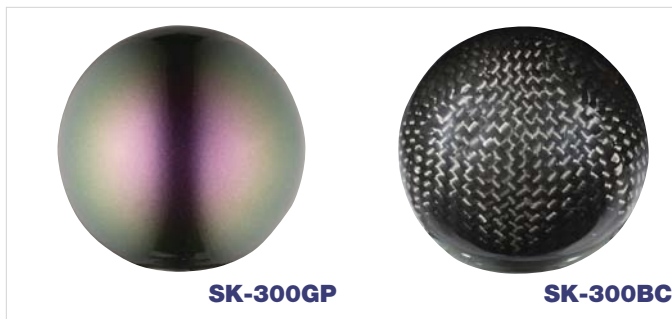
**SK-990SS**

### Features

Weighted Aluminum construction with different designs along with different shift patterns and inserts for various cars. Different weights are also available.



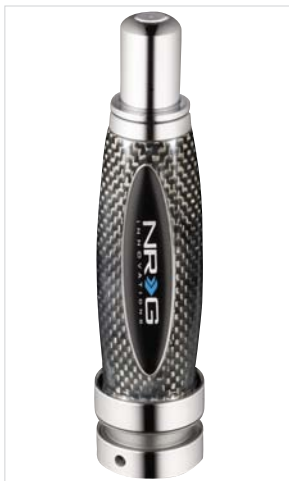
**SK-310BC**



**SK-300GP**

**SK-300BC**

## Hand Brake



**HK-990BC**



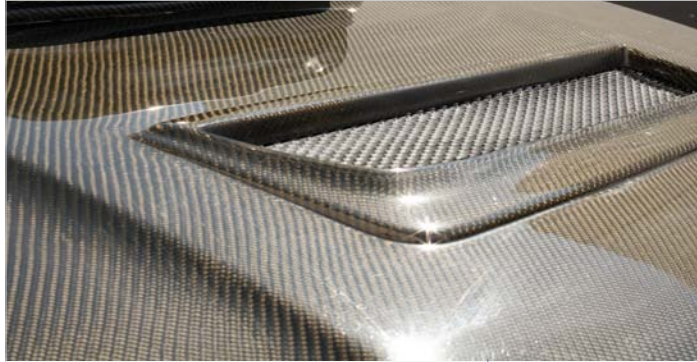
**HK-990SS**



**HK-900T**

## Exterior

Carbon Fiber Hood and Trunk - This product reduces the front or rear weight of the vehicle resulting in better power to weight ratio. Improves acceleration, braking, and cornering by producing less inertial force than the original hood. Different designs can also improve aerodynamics, downforce, and cooling.



### Features

FRP Carbon fiber construction, with fiber glass reinforced underlay. OEM fitment and locking however, hood locks are highly recommended



**CARB-A200**



**CARB-A400**

Rear Wing - This product improves rear end stability by providing large amounts of downforce to the rear of the car at high speeds. This product is a must for any vehicle competing at time attacks and drifting where rear end stability can be the difference between a win and a loss. Downforce provided is also adjustable according to height, angle, and size of the wing.

### Features:

FRP Carbon wing with aluminum reinforcement and brackets.  
Mounting hardware included



**Exterior**

Carbon Mirrors - Provides vehicle with the Formula 1 type mirror look. Made from high quality carbon fiber overlay and a highly reflective mirror, this unit will complement the exterior of any performance vehicle.

- Features
- Carbon Fiber Overlay
  - High reflection convex mirror
  - Mounting hardware included



- Features
- Steel construction for lock and sandwich type mounting points
  - Carbon fiber overlay to seamless look
  - Available in silver or black carbon fiber



Carbon Fiber Hood Locks - This product provides the perfect complement to any hood, carbon fiber or not, by providing an extra level of safety and style. Carbon fiber locks allow a virtually seamless look to a carbon fiber hood which needs extra support due to its light weight nature.

Carbon Fiber Canards - These units were designed to increase overall downforce of a vehicle. Universal designs allow different mounting points for front or rear bumpers. Ideal for high speed driving conditions to increase vehicle stability on the street or track. Constructed with high grade carbon fiber with steel mounting brackets.



**CARB-C100**



## Carbon Fiber Products

Carbon Fiber Frog-Eye Pod Gauges - Provides a carbon fiber piece as an alternative to the ever popular pillar gauge pod. Lightweight, sturdy and at the same time, adds flair to the interior of a vehicle. Perfect for those who want to keep a semi- factory look while adding extra pods for additional gauges.

**Features**

- FRP Carbon Fiber structure
- Specific applications available



Trunk Lid - Trunk covers for specific applications. Provides additional styling with little added weight while providing security for contents of trunk by covering the contents. Typically replaces the factory piece and provides a more stylish look to the vehicle.

**Features**

- FRP Carbon Fiber structure
- Specific applications available
- Available in Silver or Black carbon when applicable

### Carbon Mirror and Spark Plug Covers



### Air Diffuser



## Carbon Fiber Products



Carbon Fiber Door Sill and Arm Rest - Provides a little bit of weight reduction with a lot of interior design appeal when opening the door.

- Features
- FRP Carbon Fiber structure
- Specific applications available

**CARB-AR100**



**CARB-T100**

Carbon Fiber Engine Cover - Complements the engine bay of vehicle specific applications. Made with the highest quality glossy finish carbon fiber, gives the engine bay the NEXT RACING GENERATION in under hood styling.

- Features
- FRP Carbon Fiber structure
- Specific applications available



**CARB-E10**



**CARB-L300**

Eyelid Cover - Carbon fiber NEXT RACE GENERATION STYLING for specific headlight applications. Gives vehicle that added flair for the next big event.

- Features
- FRP Carbon Fiber structure
- Specific applications available



## Lighting

Lighting has always been an important of any vehicle's systems. Whether its for better visibility, or simply to add another flair of style, look to NRG Optics systems for your lighting needs.

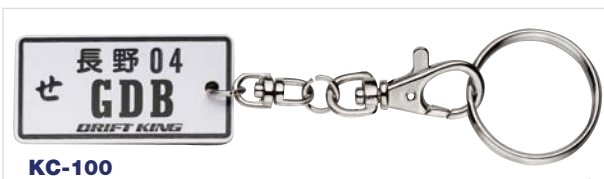
NRG Optics headlight bulbs are manufactured using the highest grade bulb filaments. We will never use refurbished components, simply because the filament is the foundation of a quality bulb. Our bulbs are designed to simulate the light color of an HID system, with a substantially lower investment. All Optics lighting carry a 90 day warranty.

Available in a wide variety of colors and sizes.





### NRG Promo Items



KC-100



KC-200



KC-300



NT-100B



NT-300W





## 2007 Upcoming Projects and Products

### Exhaust System

This product is used to maximize exhaust gas airflow for any vehicle using forced induction or natural aspiration. Allows more efficient exhaust gas expulsion using oversized piping and mandrel bent sections. Also includes a resonator for deeper sounding exhaust and noise reduction. Mufflers are also included for style and additional noise reduction and tone control. More efficient airflow once again results in more horsepower for your application.



#### Features

- Mandrel bent for maximum efficiency and smoothest airflow
- Oversized for better and more efficient airflow.
- Tempered Stainless Steel and seam welded for maximum durability.
- Mufflers available in stainless steel or polished steel
- Flanges laser cut using OEM patterns for best possible fitment
- Includes all mounting hardware necessary.

### Muffler



**MFL-801**



**MFL-210**



**MFL-301**



**MFL-110**



**MFL-111**

## S2000 Strut Cross Brace



**STB-001**



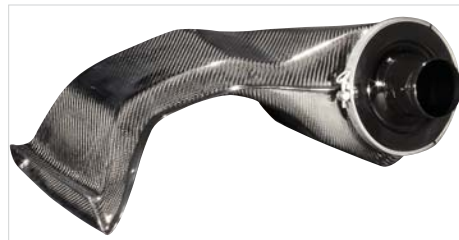
This unit was specifically designed for the S2000 enthusiast who wants to maximize their vehicle's potential. Unlike most braces of for the S2000 which does not consider the rear setted engine mount in the engine bay of the S2000, this unit effectively distributes cornering forces throughout the chassis and the cross member. Provides for the best in steering responsiveness and handling, this is a must have for any S2000 owner.

### Features

One piece solid construction and polished stainless steel  
All mounting hardware included

## Carbon Fiber Intake Systems

Take your S2000's performance to the next level with NRG Innovations' Full Carbon Fiber Intake System. This unit was designed with the latest in performance and weight reduction technology in mind. Constructed to channel in much more airflow than the stock S2000's intake capabilities, this unit will allow your vehicle to run at its engine's full potential. Includes high flow cotton air-filter to maximize airflow while maintaining reliability.



### Features

Full carbon fiber construction  
High flow filter and element  
All mounting hardware included



Also available in one piece snorkel only to better channel airflow while maintaining stock airbox.



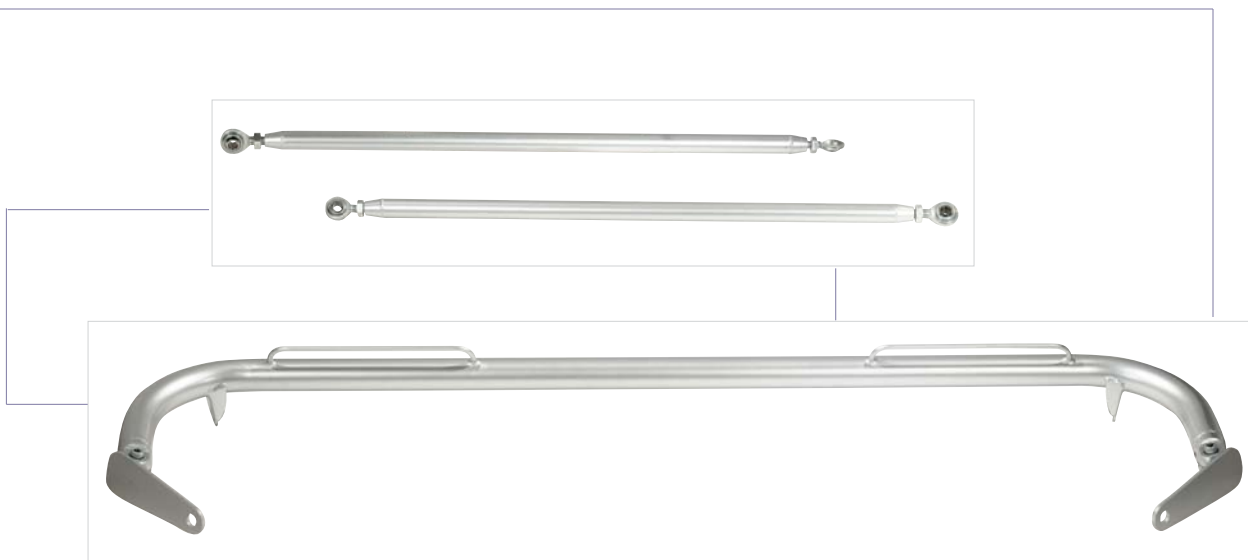
## Seat Belt Harness Bar

Tri-Point bar attachment - Add another level of chassis stiffening to your vehicle with the NRG Innovations tri-point bar attachment for strut tower braces. With the triangulation and expansion of force in high-stress point areas of the vehicle, namely the strut-towers, these units dramatically reduce frontal load body flexing and improve overall handling and braking abilities. Can be used in conjunction with many types of strut tower braces from tubular to flat types.



### Features

- Solid Aluminum construction
- Pillowball ends for adjustability and easy installation
- Application specific
- Includes all mounting hardware



Complete your safety system upgrade with NRG Innovations' seat belt harness bar. Designed with the utmost in quality and durability in mind, these units provide a means to **attach a multiple** seat belt harness system safely into your vehicle. Also provides a nice interior showpiece along with additional chassis reinforcement into your vehicle..

### Features

- 4-point mounting position Full-aluminum solid construction Universal as well as application specific units available.
- Includes all mounting hardware for easy installation.



## Competition Suspension Kits



The ultimate upgrade for your vehicle's suspension. NRG Innovations' competition coilover kits feature full adjustability, through the utilization of dual reservoir damper design with 4-way settings and a 30mm damper shaft. These dampers are designed with the best reliability and performance in mind. Pre-valved for spring rates up to 22kg/mm. These units also feature your choice of spring rates from 4kg-22kg exceeding SAE standards for anti-sag design. 3 height perches allow ride height to be adjusted without altering spring rates.



- Feature
- Matt-black Aluminum body construction
- Red Anti-sag springs with choice of rates
- 4-way damper adjustability bound/rebound
- Short stroke
- 30mm damper shaft



PART#	DESCRIPTION	PART#	DESCRIPTION
<b>Black Carbon Fiber Frog Eye Gauge Pods</b>		<b>Titanium Finish Strut Brace</b>	
CARB-F110	Blk. C.F. Frog Eye Gauge Pods - 96-00 Civic	CSI-401	TN Front Strut Brace - 94-97 Accord
CARB-F120	Blk. C.F. Frog Eye Gauge Pods - 01-Up Civic	CSI-402	TN Front Strut Brace - 98-00 Accord
CARB-F400	Blk. C.F. Frog Eye Gauge Pods - 94-00 Integra	CSI-403	TN Front Strut Brace - 92-95 Civic
CARB-F500	Blk. C.F. Frog Eye Gauge Pods - 94-97 Accord	CSI-404	TN Rear Strut Brace - 92-95 Civic
CARB-F600	Blk. C.F. Frog Eye Gauge Pods - 95-99 Eclipse	CSI-405	TN Front Strut Brace - 96-98 Civic
CARB-F700	Blk. C.F. Frog Eye Gauge Pods - 95-99 Neon	CSI-406	TN Rear Strut Brace - 96-98 Civic
CARB-F800	Blk. C.F. 3pcs Gauge Pod 02-04 WRX/Sti	CSI-407	TN Front Strut Brace - 01-Up Civic
CARB-F900	Blk. C.F. Gauge Pod EVO	<b>Silver Carbon Fiber / Aluminum Strut Brace</b>	
<b>Carbon Mirrors</b>		CSS-401	Silver C.F. Front Strut Bar - 94-97 Accord
CARB-M200	F1 Style Universal Mirrors	CSS-402	Silver C.F. Front Strut Bar - 98-00 Accord
CARB-M100	92-95 Civic SP Style Carbon Mirrors	CSS-403	Silver C.F. Front Strut Bar - 92-Up Civic
CARB-M110	96-00 Civic SP Style Carbon Mirrors	CSS-404	Silver C.F. Rear Strut Bar - 92-95 Civic
<b>S2000 Black Carbon Fiber Intake</b>		CSS-405	Silver C.F. Rear Strut Bar - 96-Up Civic
CARB-V120	S2000 Carbon Airbox Intake w/ Filter	CSS-406	Silver C.F. Rear Strut Bar - 96-98 Civic
CARB-V130	S2000 Carbon Air Duct	CSS-407	Silver C.F. Front Strut Bar 96-01 Civic
<b>Black Carbon Fiber Misc</b>		<b>Engine Damper Kits</b>	
CARB-V100	Carbon Fiber Spark Plug Cover B-series	EDA-101B	Engine Damper - 92-95 Civic SOHC - Blue
CARB-P100	Carbon Fiber License Plate Frame	EDA-101R	Engine Damper - 92-95 Civic SOHC - Red
CARB-C100	Carbon Canards 4pcs	EDA-101S	Engine Damper - 92-95 Civic SOHC - Silver
<b>Black Carbon Fiber Interior Deck Lids for Hatchback</b>		EDA-101T	Engine Damper - 92-95 Civic SOHC - Titanium
CARB-IL100	Blk. C.F. Interior Deck Lid - 92-95 Civic HB	EDA-201B	Engine Damper - 96-00 Civic - Blue
CARB-IL110	Blk. C.F. Interior Deck Lid - 96-00 Civic HB	EDA-201R	Engine Damper - 96-00 Civic - Red
CARB-IL120	Blk. C.F. Interior Deck Lid - 03-Up Civic HB	EDA-201S	Engine Damper - 96-00 Civic - Silver
CARB-IL300	Blk. C.F. Interior Deck Lid - 02-Up Mini Cooper	EDA-201T	Engine Damper - 96-00 Civic - Titanium
CARB-IL400	Blk. C.F. Interior Deck Lid - 94-00 Integra HB	EDA-401T	Engine Damper - 92+Accord/Prelude/Universal Titanium
<b>Carbon Fiber Interior Mirror Cover</b>		EDA-401B	Engine Damper - 92+Accord/Prelude/Universal Blue
CARB-I100	Blk C.F. Interior Mirror Cover - 96-00 Civic CB	EDA-401R	Engine Damper - 92+Accord/Prelude/Universal Red
CARB-I101	Silver C.F. Interior Mirror Cover - 96-00 Civic CB	EDA-401S	Engine Damper - 92+Accord/Prelude/Universal Silver
CARB-I110	Blk C.F. Interior Mirror Cover - 92-95 Civic CB	EDA-402	Engine Damper - 2000+ S2000
CARB-I111	Silver C.F. Interior Mirror Cover - 92-95 Civic CB	<b>EPAC</b>	
<b>Black Carbon Fiber Trunk Lids</b>		EPAC-100	Charging System
CARB-T100	Blk. C.F. Trunk Lids - 92-95 Civic Hatchback	EPAC-300	Charging System - Compact Size
CARB-T101	Blk. C.F. Trunk Lids - 92-95 Civic Coupe	GK-100	Grounding System
CARB-T110	Blk. C.F. Trunk Lids - 96-00 Civic Hatchback	<b>Fuel Regulators</b>	
CARB-T111	Blk. C.F. Trunk Lids - 96-00 Civic Coupe	FRG-100BC	Blk. Chr. Fuel Regulator
CARB-T120	Blk. C.F. Trunk Lids - 02-03 Civic Hatchback Si	FRG-100T I	TN Fuel Regulator
CARB-T200	Blk. C.F. Trunk Lids - 96-00 Impreza WRX	FRG-HONC	Fuel Regulator Connector - Honda
CARB-T210	Blk. C.F. Trunk Lids - 01-Up Impreza WRX	FRG-MITC	Fuel Regulator Connector - Mitsubishi
<b>Carbon Fiber Overlay Hood Pins</b>		FRG-TNMC	Fuel Regulator Connector - Toyota/Nissan/Mazda
CHL-100	Black Carbon Fiber Overlay Hood Lock w/ key	FRG-110G	Fuel Regulator Gauge (70psi)
CHL-200	Silver Carbon Fiber Overlay Hood Lock w/ key	FRG-110G	Fuel Regulator Gauge (100psi) Red
<b>Carbon Fiber Accessories</b>		FRG-100CF	Fuel Regulator Gauge (100psi) Carbon
CARB-D100	Blk. C.F. Door Step - 03-Up 350Z L/R Pair	<b>Titanium Finish Lower Brace</b>	
CARB-E10	Blk. C.F. Engine Cover - 03-Up 350Z	LBR-102	Lower Bar - 92-95 Honda Civic 2 Pt.
CARB-L300	Blk. C.F. Lamp Cover - 03-Up 350Z	LBR-104	Lower Brace - 92-95 Honda Civic 4 Pt.
CARB-AR100	Blk. C.F. Arm Rest Console - 92-95 Civic	LBR-104	Lower Brace - 94-01 Acura Integra 4 Pt.
CARB-AR110	Blk. C.F. Arm Rest Console - 96-00 Civic	LBR-202	Lower Bar - 96-00 Honda Civic 2 Pt.
<b>Carbon Fiber Wings</b>		LBR-204	Lower Brace - 96-00 Honda Civic 4 Pt.
CARB-A100	Blk. C.F. Trunk Wing 99-04 BMW E46	LBR-304	Lower Brace - 02-UP WRX 4 Pt.
CARB-A200	Bolt on adjustable Carbon Fiber wing WRX Sti GDB	LBR-402	Lower Bar - 96-00 Sentra 2 Pt.
CARB-A300	Bolt on carbon wing EVO	LBR-404	Lower Brace - 02-Up Toyota MR-S(ZZW30) 4 Pt.
CARB-A400	Carbon Fiber Spoiler 92-95 Civic HB	LBR-502	Lower Bar - AE86 Toyota Corolla GTS 2 Pt.
CARB-A400L	Carbon Fiber Spoiler 92-95 Civic HB w/ LED	LBR-602	Rear Lower Bar - 92-95 Honda Civic 2 Pt.
CARB-A410	Carbon Fiber Spoiler 96-00 Civic HB	LBR-702	Rear lower Bar - 96-00 Honda Civic 2 Pt.
CARB-A410L	Carbon Fiber Spoiler 96-00 Civic HB w/ LED	LBR-802	Lower Brace 89-97 Nissan 240SX
<b>Black Chrome Strut Brace</b>		<b>Oil Catch Tank</b>	
CSC-401	Blk. Chr. Front Strut Brace - 94-97 Accord	OCC-100C	Oil Catch Tank - Chrome Universal Kit
CSC-402	Blk. Chr. Front Stut Brace - 98-00 Accord	<b>Color Coated Minature Bulbs</b>	
CSC-403	Blk. Chr. Front Strut Brace - 92-95 Civic	OP-1156B	1156 - 12V 32CP Blue (Pair)
CSC-404	Blk. Chr. Rear Strut Brace - 92-95 Civic	OP-1156G	1156 - 12V 32CP Green (Pair)
CSC-405	Blk. Chr. Front Strut Brace - 96-98 Civic	OP-1156P	1156 - 12V 32CP Purple (Pair)
CSC-406	Blk. Chr. Rear Strut Brace - 96-98 Civic	OP-1156R	1156 - 12V 32CP Red (Pair)
CSC-407	Blk. Chr. Front Strut Brace - 01-Up Civic	OP-1157B	1157 - 12V 32/3CP Blue (Pair)
<b>Black Carbon Fiber / Titanium Finish Strut Brace</b>		OP-1157G	1157 - 12V 32/3CP Green (Pair)
CSC-501	Blk. C.F. / TN Front Strut Brace - 94-97 Accord	OP-1157P	1157 - 12V 32/3CP Purple (Pair)
CSC-502	Blk. C.F. / TN Front Strut Brace - 98-00 Accord	OP-1157R	1157 - 12V 32/3CP Red (Pair)
CSC-503	Blk. C.F. / TN Front Strut Brace - 92-95 Civic	OP-194B	194 - 12V 2CP Blue (Pair)
CSC-504	Blk. C.F. / TN Rear Strut Brace - 92-95 Civic	OP-194G	194 - 12V 2CP Green (Pair)
CSC-505	Blk. C.F. / TN Front Strut Brace - 96-98 Civic	OP-194P	194 - 12V 2CP Purple (Pair)
CSC-506	Blk. C.F. / TN Rear Strut Brace - 96-98 Civic	OP-194R	194 - 12V 2CP Red (Pair)
CSC-507	Blk. C.F. / TN Front Strut Brace - 01-Up Civic	OP-2057R	2057 - 12V 32/2CP Red (Pair)
		OP-3022B	3022 - 12V 5W Blue (Pair)

PART#	DESCRIPTION	PART #	DESCRIPTION
<b>Color Coated Minature Bulbs (continue)</b>		<b>Seat Belt Harness (continue)</b>	
OP-3022G	3022 - 12V 5W Green (Pair)	SBH-4PCBL	4 Point Seat Belt Harness / Cam Lock- Blue
OP-3022P	3022 - 12V 5W Purple (Pair)	SBH-6PCB	5 Pt 3inch Seat Belt Harness / Cam Lock- Black
OP-3022R	3022 - 12V 5W Red (Pair)	SBH-6PCR	5 Pt 3inch Seat Belt Harness / Cam Lock- Red
OP-3057R	3057 - 12V 32/2CP Red (Pair)	SBH-6PCBL	5 Pt 3inch Seat Belt Harness / Cam Lock- Blue
OP-3175B	3157 - 12V 10W Blue (Pair)	<b>Slope Box</b>	
OP-3175G	3157 - 12V 10W Green (Pair)	SBX-100	Slope Box
OP-3175P	3157 - 12V 10W Purple (Pair)	<b>Coilover Kits</b>	
OP-3175R	3157 - 12V 10W Red (Pair)	SCO-210	Coilover - 98-00 Accord
OP-7443R	7443 - 12V 21/5W Red (Pair)	SCO-211	Coilover - 90-97 Accord
OP-97B	97 - 12V 6CP Blue (Pair)	SCO-220	Coilover - 95-99 Cavalier
OP-97G	97 - 12V 6CP Green (Pair)	SCO-230	Coilover - 00-01 Eclipse
OP-97P	97 - 12V 6CP Purple (Pair)	SCO-231	Coilover - 95-99 Eclipse
OP-97R	97 - 12V 6CP Red (Pair)	SCO-232	Coilover - 89-94 Eclipse
<b>Xenon Blue Super White Minature Bulbs</b>		SCO-240	Coilover - 92-96 Prelude
OP-1156W	1156 - 12V 27W Xenon Blue Super White (Pair)	SCO-241	Coilover - 97-Up Prelude
OP-1157W	1156 - 12V 27/8W Xenon Blue Super White (Pair)	SCO-250	Coilover - 95-99 Tercel
OP-194W	194 - 12V 5W Xenon Blue Super White (Pair)	SCO-260	Coilover - 95-99 Dodge Neon
OP-3057W	3057 - 12V 8W Xenon Blue Super White (Pair)	SCO-270	Coilover - 00-01 Focus
OP-3175W	6461 - 12V 10W Xenon Blue Super White (Pair)	SCO-280	Coilover - 95-99 Sentra
OP-6461W	6461 - 12V 10W Xenon Blue Super White (Pair)	SCO-290	Coilover - 93-99 Altima
OP-7440W	7440 - 12V 27W Xenon Blue Super White (Pair)	SCO-300	Coilover - 00-Up Celica
OP-7443W	7443 - 12V 27/8W Xenon Blue Super White (Pair)	SCO-310	Coilover - 88-00 Civic & 94-01 Integra
OP-912W	912 - 12V 18W Xenon Blue Super White (Pair)	<b>Shift Knobs</b>	
<b>Xenon Blue Super White Headlights Bulbs</b>		SK-100C	42mm - 5 Speed Black Carbon Fiber
OP-9004W	9004 - Optics 12V 65/45W Headlight Bulbs (Pair)	SK-100BC	42mm- 5 Speed Gun Metal
OP-9005W	9005 - Optics 12V 65W Headlight Bulbs (Pair)	SK-100N	42mm - 5 Speed Black Nickel Aluminum
OP-9006W	9006 - Optics 12V 55W Headlight Bulbs (Pair)	SK-100GP	42mm- 5 Speed Green Purple Chameleon
OP-9007W	9007 - Optics 12V 65/55W Headlight Bulbs (Pair)	SK-100SC	42mm - 5 Speed Silver Carbon Fiber
OP-H3W	H3 - Optics 12V 55W Bulbs (Pair)	SK-100T	42mm - 5 Speed Dark Titanium Aluminum
OP-H4W	H4 - Optics 12V 60/55W Headlight Bulbs (Pair)	SK-101T	42mm- 5 Speed Titanium for Honda/Nissan
OP-H7W	H7 - Optics 12V 55W Headlight Bulbs (Pair)	SK-102T	42mm- 5 Speed Titanium for Toyota
<b>Yellow Fog Light High beam bulbs</b>		SK-103T	42mm- 5 Speed Titanium for Mitsubishi
OP-9005Y	9005 - Optics 12V 65W Highbeam Bulbs (Pair)	SK-200SS	S2000 Style Shift Knob Universal
OP-H1Y	H1 - Optics 12V 55W Foglight Bulbs (Pair)	SK-201SS	S2000 Style Shift Knob for Honda/ Nissan
OP-H3Y	H3 - Optics 12V 55W Foglight Bulbs (Pair)	SK-202SS	S2000 Style Shift Knob for Toyota
<b>Office Racing Seats</b>		SK-203SS	S2000 Style Shift Knob for Mitsubishi
ROC-4B	Office Racing Seat Cloth Blue/Shelf	SK-300BC	Ball Style Universal Black Carbon
ROL-1B	Office Racing Seat Leather - Black	SK-300GP	Ball Style Universal Chameleon
RS-105B	NRG Office Sports Seat - Blue	SK-310BC	Semi-Ball wirh Logo Universal
RS-105CF	NRG Office Sports Seat - Carbon Fiber	SK-400BC	Fatboy Style Universal W/Carbon ring
RS-105R	NRG Office Sports Seat - Red	SK-501PP	Titanium Ball Style Type-R Universal
<b>Racing Seats</b>		SK-900SL	50mm - 230g Shift knob Brush Aluminum
RS-100B	NRG Cloth Sport Seat - Blue	SK-900T	50mm - 230g Shift knob Titanium Aluminum
RS-100GB	NRG Cloth Sport Seat - Grey/Black	SK-900BC	50mm - 230g Shift knob Black Carbon Fiber
RS-100R	NRG Cloth Sport Seat - Red	SK-990SS	50mm - 1.5lbs Shift Knob Brush Aluminum
RSL-101B	NRG Leather Sport Seat - Blue	<b>Hand Break Knobs</b>	
RSL-101BK	NRG Leather Sport Seat - Black	HK-900T	Hand Brake - Titanium Aluminum
RSL-101GB	NRG Leather Sport Seat - Grey/Black	HK-900SL	Hand Brake - Brush Aluminum
RSL-101R	NRG Leather Sport Seat - Red	HK-900BC	Hand Brake - Black Carbon Fiber
RSC-100L	EVO Style Cloth Sport Seat w/ Logo (Left) - Black	HK-990SS	Hand Brake - Weighted Brush Aluminum
RSC-100R	EVO Style Cloth Sport Seat w/ Logo (Right) - Black	<b>Steering Wheel Quick Release Kit Gen 1.5</b>	
RSC-101L	EVO Style Cloth Sport Seat (Left) - Black	SRK-100B	Quick Release Kit - Silver/Blue
RSC-101R	EVO Style Cloth Sport Seat (Right) - Black	SRK-100CF	Quick Release Kit - Silver/Black Carbon Fiber
RSC-200L	Type-R Cloth Sport Seat Black w/ Red Stitch (Left)	SRK-100R	Quick Release Kit - Silver/Red
RSC-200R	Type-R Cloth Sport Seat Black w/ Red Stitch (Right)	SRK-100S	Quick Release Kit - Silver/Matte Silver
RSC-210L	Type-R Cloth Sport Seat Red w/ Red Stich (Left)	SRK-100SCF	Quick Release Kit - Silver/Silver Carbon Fiber
RSC-210R	Type-R Cloth Sport Seat Red w/ Red Stich (Right)	SRK-100T	Quick Release Kit - Silver/Titanium
RSC-202L	PVC leather Sport Seats Red w/ Black Trim (Left)	SRK-100BC	Quick Release Kit- Silver/Black Chrome Ring
RSC-202R	PVC leather Sport Seats Red w/ Black Trim (Right)	<b>Quick Lock Hub</b>	
RSC-204L	PVC leather Sport Seats Black w/ Black Trim (Left)	SRK-101LS	Quick Lock Silver Use w/ Quick Release Kit
RSC-204R	PVC leather Sport Seats Black w/ Black Trim (Right)	SRK-101LB	Quick Lock Shine Black Use w/ Quick Release Kit
RSC-5C	Racing Seat - Carbon Fiber Finish	SRK-101MB	Quick Lock Matt Black Use w/ Quick Release Kit
<b>Sport Full Bucket Seats</b>		<b>Steering Wheel Quick Release Kit GEN TWO</b>	
RSC-300	Carbon Fiber Bucket Seat (Large)	SRK-200S	Quick Release - Silver Body/Titanium Chrome Ring
RSC-310	Carbon Fiber Bucket Seat (Medium)	SRK-200BK	Quick Release - Black Body/Titanium Chrome Ring
RSC-320	Carbon Fiber Bucket Seat (Small)	SRK-200R	Quick Release - Red Body/Titanium Chrome Ring
RSC-400	FRP Fiberglass Bucket (Large)	SRK-200BL	Quick Release - Blue Body/Titanium Chrome Ring
RSC-410	FRP Fiberglass Bucket (Medium)	SRK-200CF	Quick Release - Black Body/Black Carbon Fiber Ring
RSC-100MB	Bucket Side Bracket 2pcs.	SRK-200SC	Quick Release - Black Body/Silver Carbon Ring
<b>Seat Belt Harness</b>		<b>Steering Wheel Quick Release Kit GEN TWO (5-hole)</b>	
SBH-100B4	Point Safety Harness - Black	SRK-300BK	Quick Release - Black Body/Titanium Chrome Ring
SBH-100BL	4 Point Safety Harness - Blue	SRK-300BL	Quick Release - Blue Body/Titanium Chrome Ring
SBH-100R4	Point Safety Harness - Red	SRK-300R	Quick Release - Red Body/Titanium Chrome Ring
SBH-4PCB	4 Point Seat Belt Harness / Cam Lock- Black		





PART #	DESCRIPTION
Steering Wheel Quick Release Kit GEN 2.5 (ring color interchangeable)	
SRK-250BK	Quick Release Kit Black/Black Ring
SRK-250BC	Quick Release Kit Black/Black Chrome Ring
SRK-250R	Quick Release Kit Red/Red Ring
SRK-250BL	Quick Release Kit Blue/Blue Ring
SRK-250S	Quick Release Kit Silver/Silver Ring
SRK-350BK	Quick Release Kit Black/Black Ring (5-hole)
SRK-350BC	Quick Release Kit Black/Black Chrome Ring (5-hole)
SRK-350R	Quick Release Kit Red/Red Ring (5-hole)
SRK-350BL	Quick Release Kit Blue/Blue Ring (5-hole)
Steering Wheel Quick Release Kit THIN VERSION	
SRK-400BK	Thin Quick Release Black
SRK-400R	Thin Quick Release Red
SRK-400BL	Thin Quick Release Blue
SRK-400S	Thin Quick Release Silver
Short Hubs	
SRK-100H	Short Hub Mitsubishi / Subaru
SRK-110H	Short Hub EG6 Civic / Integra
SRK-120H	Short Hub Toyota / Scion
SRK-130H	Short Hub EK9 Civic/ S2000 / Prelude
SRK-140H	Short Hub S13 S14 Nissan 240
SRK-150H	Short Hub NSX
SRK-160H	Short Hub Mazda
SRK-170H	Short Hub Dodge
Steering Wheels	
ST-001RB	300mm Sport Leather Steering wheel/blk trim
ST-001RBL	300mm Sport Leather Steering wheel/blue trim
ST-001RR	300mm Sport Leather Steering wheel/red trim
ST-001RSL	300mm Sport Leather Steering wheel/silver trim
ST-001RCB	300mm Sport Leather Steering wheel/Carbon trim
ST-006R	350mm Sport 3" deep dish steering wheel
ST-006S	350mm Sport 3" deep dish steering wheel
ST-007S	320mm Sport Suede Steering Wheel w/ 2 botton
ST-007R	320mm Sport Leather Steering Wheel w/ 2 botton
ST-008R	350mm Sport Leather Steering Wheel with trim
ST-009S	320mm Sport Suede Steering Wheel Oval
ST-009R	320mm Sport Leather Steering Wheel Oval
ST-011S	350mm Sport Suede Steering Wheel Dual Spoke
ST-011R	350mm Sport Leather Steering Wheel Dual Spoke
ST-012S	320mm Sport Suede Steering Wheel Race
ST-012R	320mm Sport Leather Steering Wheel w/ red stitch
ST-012RS	320mm Sport Leather/Suede Steering wheel w/ red stitch
STR-001BC	Black Carbon Fiber Ring with Horn Button
STR-001SC	Silver Carbon Fiber Ring with Horn Button
STR-013R	Aluminum Style Sport Steering Wheel w/horn
Hood Damper Kit Polish	
HD-100	92-95 Honda Civic
HD-110	96-00 Honda Civic
HD-120	94-01 Acura Integra
HD-130	02+ Acura RSX
HD-140	00+ Honda S2000
HD-200	00+ Subaru WRX Sti
HD-300	03+ Nissan Z350
HD-400	93-97 Mazda RX7
HD-500	05+ Mazda 6
Hood Damper Kit Carbon Fiber	
HD-100CF	92-95 Honda Civic
HD-110CF	96-00 Honda Civic
HD-120CF	94-01 Acura Integra
HD-130CF	02+ Acura RSX
HD-140CF	00+ Honda S2000/ 1/2 Pressure Available
HD-200CF	00+ Subaru WRX Sti
HD-300CF	03+ Nissan Z350/ G35 1/2 Pressure Available
HD-400CF	93-97 Mazda RX7
HD-500CF	05+ Mazda 6
Titanium Finish Flat Strut Bar	
TNB-401	Front Strut Bar - 94-97 Accord
TNB-402	Front Strut Bar - 98-00 Accord
TNB-403	Front Strut Bar - 92-95 Civic
TNB-404	Rear Strut Bar - 92-95 Civic
TNB-405	Front Strut Bar - 96-98 Civic
TNB-406	Rear Strut Bar - 96-98 Civic
TNB-407	Front Strut Bar - 01-Up Civic
TNB-409	Front Strut Bar - Nissan 240 S13 S14
TNB-409CF	Front Strut Bar - Nissan 240 S13 S14 (Carbon)

PART #	DESCRIPTION
Titanium Finish Flat Strut Bar (continue)	
TNB-410	Rear Strut Bar - Nissan 240 S13 S14
TNB-410CF	Rear Strut Bar - Nissan 240 S13 S14 (carbon)
TNB-411	Front Strut Bar - Nissan 350z
TNB-411CF	Front Strut Bar - Nissan 350z (carbon)
TNB-412	Front Strut Bar - Scion xA, xB
TNB-412CF	Front Strut Bar - Scion xA, xB (carbon)
TNB-413	Front Strut bar Infiniti G35
SBK-001	X brace Strut Bar S2000
Triangle Bar Attachments	
TRI-001	92-95 Civic Triangle Attachment
TRI-002	96-00 Civic Triangle Attachment
TRI-003	89-93 240SX Triangle Attachment
TRI-004	84-87 AE86 Corolla Triangle Attachment
TRI-005	93-01 Integra Triangle Attachment
Gear Console Black	
TT-001	Gear Console - 92-95 Civic
TT-002	Gear Console - 96-00 Civic
TT-003	Gear Console - 01-Up Civic
TT-004	Gear Console - 01-Up RSX
TT-005	Gear Console - 94-97 Accord
TT-006	Gear Console - 98-02 Accord
TT-008	Gear Console - 01-Up Impreza
TT-010	Gear Console - 94-01 Integra
Gear Console Carbon Fiber	
TT-001CBBK	Gear Console - 92-95 Civic
TT-002CBBK	Gear Console - 96-00 Civic
TT-003CBBK	Gear Console - 01-Up Civic
TT-004CBBK	Gear Console - 01-Up RSX
TT-005CBBK	Gear Console - 94-97 Accord
TT-006CBBK	Gear Console - 98-02 Accord
TT-008CBBK	Gear Console - 01-Up Impreza
TT-010CBBK	Gear Console - 94-01 Integra
Carbon Fiber Hood CH-Misc	
CF004	02-03 Toyota Matrix
CF008	01-03 Honda Civic
CF012	94-01 Acura Integra
CF014	99-00 Mustang Cobra
CF015	00-02 Dodge Neon
CF018	93-97 Honda Civic
CF019	90-93 Honda Accord
CF020	02-05 Chevy Cavalier
CF021	98-01 Ford Focus 4D
CF022	03-05 Nissan 350Z
CF023	98-00 Honda Accord 2D
CF025	98-00 Honda Accord 4D
CF031	95-99 Dodge Neon
CF032	93-97 Ford Probe
CF033	98-02 Nissan Altima
CF034	95-98 Nissan 240SX
CF035	95-99 Nissan Maxima
CF036	00-03 Nissan Maxima
CF038	93-96 Mazda RX7
CF039	00-04 Honda S2000
CF040	01-04 Lexus IS300
CF042	04-05 Mazda RX8
Promotional Key Chains	
KC-100	GDB, S15, S13, DC5, EG6, EK9, EP3, DC2, Z33, SW20, AE86
KC-200	Carbon Fiber NRG Logo Keychain
KC-300	Mini Quick Release Keychain
NRG T-Shirt	
NT-100B	Student Driver (black)
NT-100W	Student Driver (white)
NT-200B	No Tune, No Life Tshirts (black)
NT-300B	Elderly Driver (black)
NT-300W	Elderly Driver (white)

\*Prices Subject to Change without Notice